

Mount Majura Estate

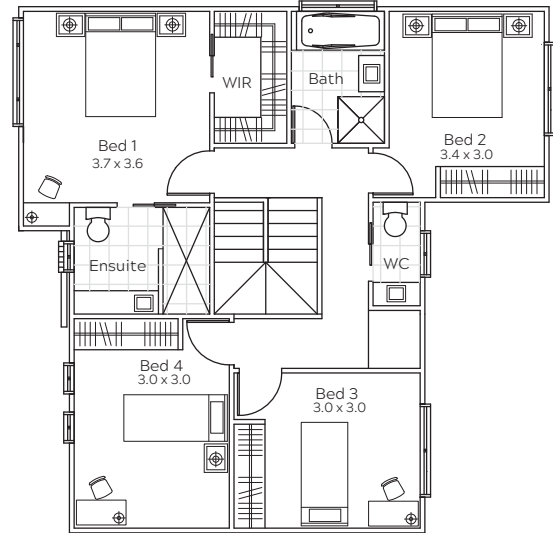
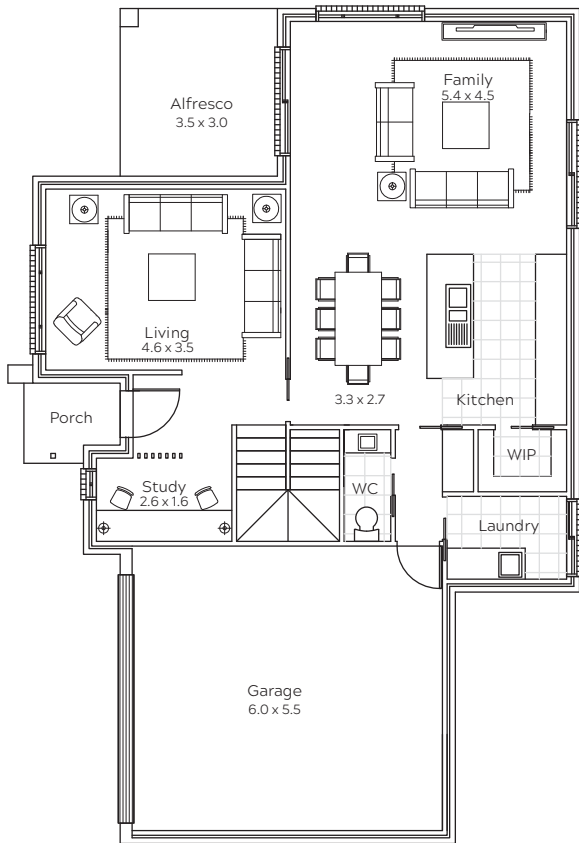
Block AO

4  1  1  2 

Block Size: **374sqm**

Living: **92.4sqm** (Lower) **78.2sqm** (Upper) | Garage: **37.0sqm** | Alfresco: **9.8sqm** | Porch: **2.8sqm**

TOTAL: **220.2sqm**



Features included:

- Fixed-price building contract.
- 7 year builder's structural warranty and 90-day maintenance liability period.
- Home owner warranty insurance.
- Architectural, engineering and hydraulic plans.
- Building applications, approvals and permits.
- Private certifier inspections and approvals.
- Energy efficiency reports.
- Premium inclusions and finishes.
- 2.55m ceilings throughout.
- 40mm stone bench to kitchen and 900m stainless steel appliances.
- All floor coverings (as per the Premium inclusions schedule).
- Reverse-cycle ducted heating and cooling.
- Instantaneous gas hot water system.
- Alfresco and water tank included.



BBS HOMES
LIVING BEGINS

1300 897 179

sales@bbshomes.com.au
bbshomes.com.au

Disclaimer: floorplans and perspectives shown are artist's impressions only. Any references to size or dimensions are approximate and not intended to be precise. The information contained in this document/other accompanying material/mediums is provided for information purposes only. All rights and responsibilities of the seller, the builder and the buyer (including prices) will be contained in a land sale contract between the seller and the buyer and a home build contract between the buyer and the builder. The buyer should make their own enquiries and seek legal advice as to the terms of these contracts. The builder disclaims all liability with respect to all information and material provided within this document/other accompanying material/mediums. Copyright for floorplan designs are owned by the builder and must not be copied or distributed without the builder's prior written permission.